



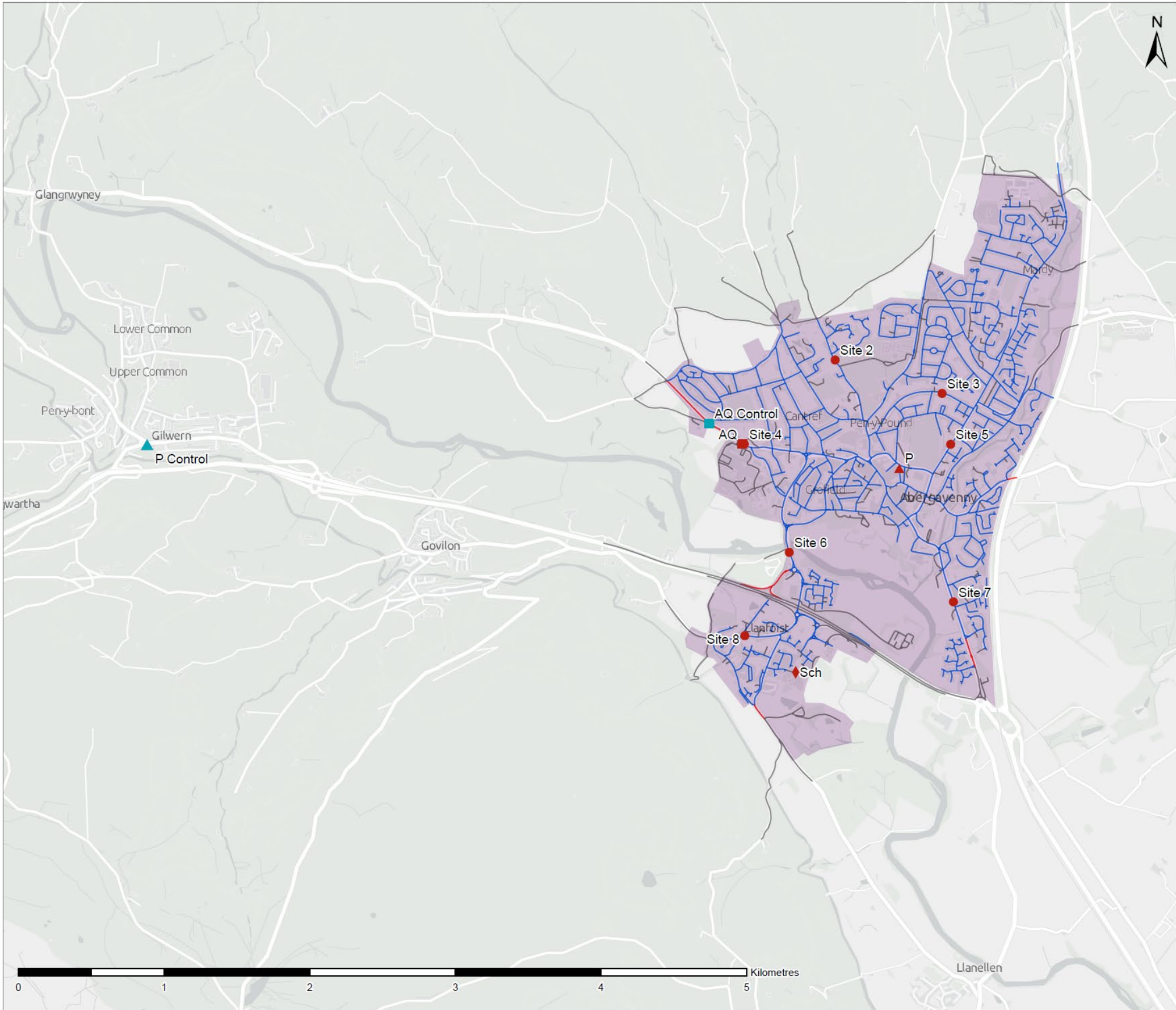
# **Default 20mph Speed Limit on Restricted Roads**

## **Phase 1**

### **Interim Monitoring Report**

#### **Appendix A**

#### **Data Collection Locations**



### Legend

- Phase One Boundary
- Monitoring Sites**
- Air Quality
- Air Quality (Control)
- Pedestrian
- Pedestrian (Control)
- School
- Site
- Road Network**
- 20mph
- Exception
- Out of Scope

**Licence**  
 © Crown copyright and database rights 2023. OS 0100060670

**TRAFNIDIAETH CYMRU**  
**TRANSPORT FOR WALES**

Cwmwl Cyffwrdding Cymru: Cofrestrwyd yng Nghymru. Rhif Cwmwl 0847013.  
 Cylfaeddi Deuddeg Gofrestrwyd: 3 Llyn Cadwyn, Pen-y-bont, Rhondda Cynon Taf, CF37 4TH.  
 A Company Limited by Guarantee. Registered in Wales. Company No. 0847013.  
 Registered Office Address: 3 Llyn Cadwyn, Pen-y-bont, Rhondda Cynon Taf, CF37 4TH.

**Project Title**  
 20mph Phase One Monitoring

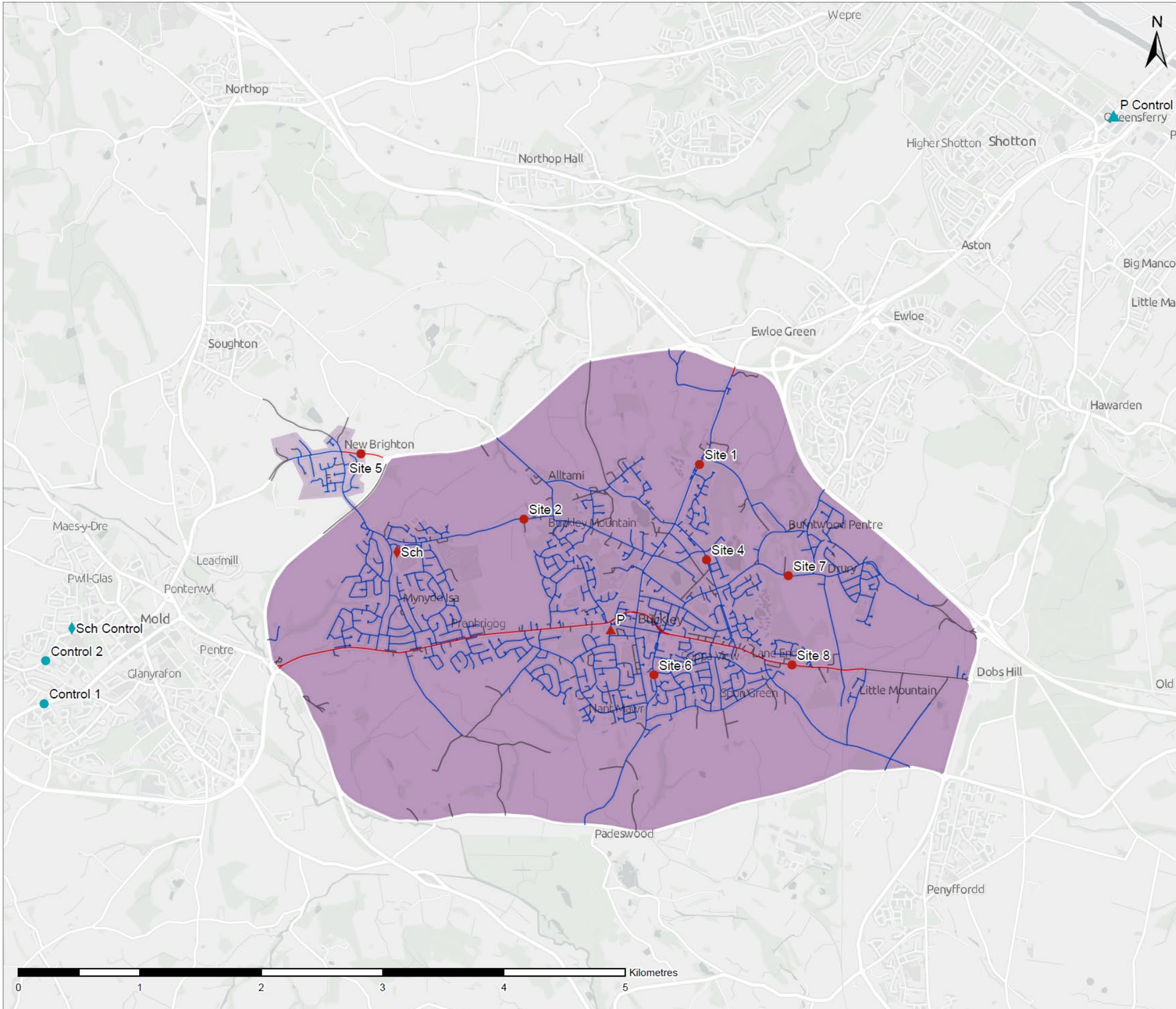
**Drawing Title**  
 Abergavenny

**Scale at A3**  
 1:25,000

**Drawing Status**  
 For Information

<b>Drawing Number</b> Figure A.1	<b>Revision</b> P01
-------------------------------------	------------------------





### Legend

- Phase One Boundary
- Monitoring Sites**
- ▲ Pedestrian
- ▲ Pedestrian (Control)
- ◆ School
- ◆ School (Control)
- Site
- Site (Control)
- Road Network**
- 20mph
- Exception
- Out of Scope

**Licence**  
 © Crown copyright and database rights 2023. OS 0100060670



Map of Wales showing the location of the project area. The project area is highlighted in red. The map is a copyright of the Ordnance Survey. The project area is highlighted in red. The map is a copyright of the Ordnance Survey.

**Project Title**  
 20mph Phase One Monitoring

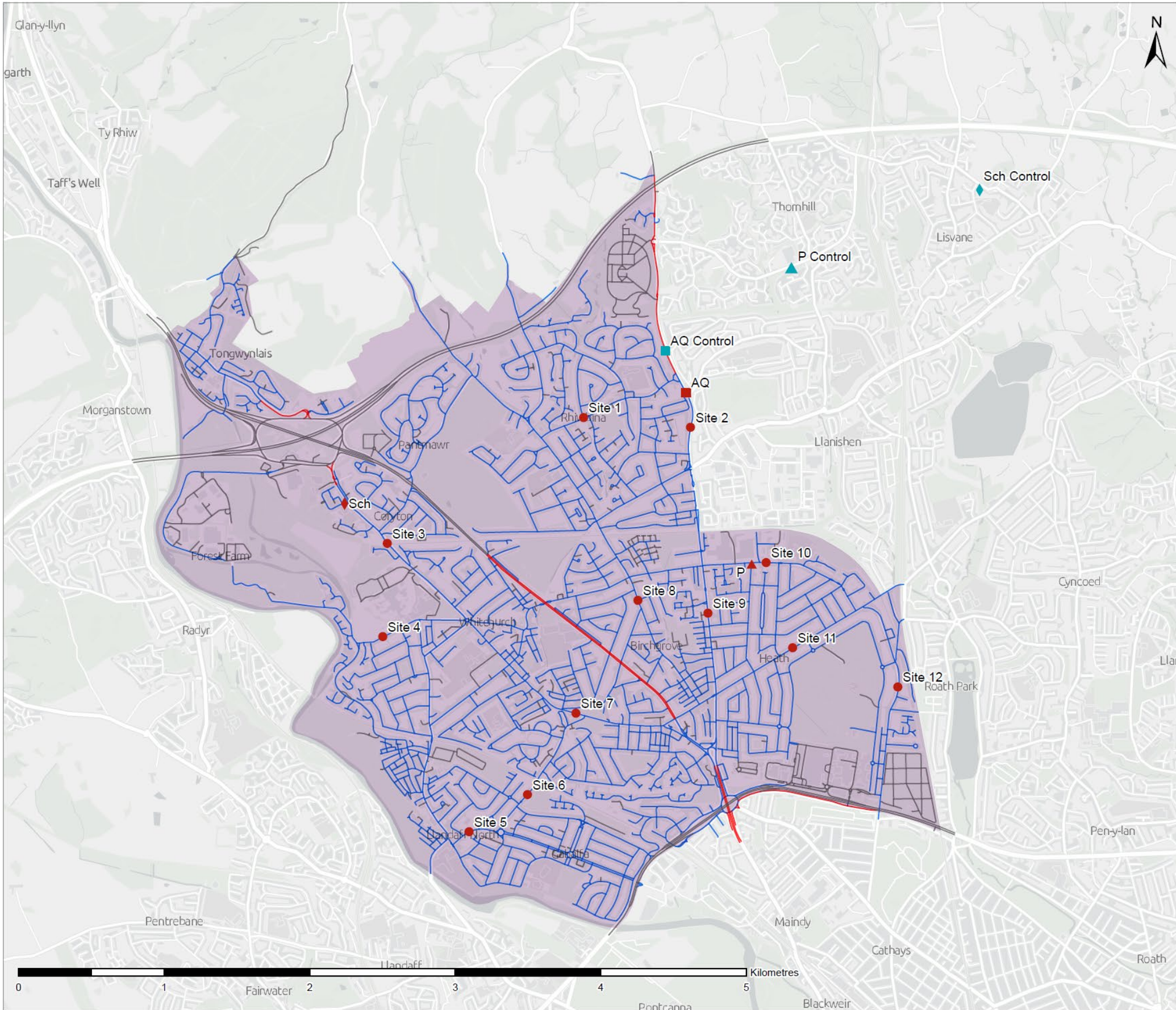
**Drawing Title**  
 Buckley

**Scale at A3**  
 1:30,000

**Drawing Status**  
 For Information

<b>Drawing Number</b> Figure A.2	<b>Revision</b> P01
-------------------------------------	------------------------





### Legend

- Phase One Boundary
- Monitoring Sites**
- Air Quality
- Air Quality (Control)
- Pedestrian
- Pedestrian (Control)
- School
- School (Control)
- Site
- Road Network**
- 20mph
- Exception
- Out of Scope

**Licence**  
 © Crown copyright and database rights 2023. OS 0100060670



**TRAFNIDIAETH CYMRU**  
**TRANSPORT FOR WALES**

Cwmwl Cyllegrigol ddydd Wladyslaw, Cofrestrwyd yng Nghymru. Rhif Cwmwl 08476012.  
 Cyllegrd Deyddia Gofrestrwyd: 3 Llyn Cadeirn, Pen-y-lan, Rhondda Cynon Taf, CF37 4TH  
 A Company Limited by Guarantee. Registered in Wales. Company No. 08476012.  
 Registered Office Address: 3 Llyn Cadeirn, Pen-y-lan, Rhondda Cynon Taf, CF37 4TH

**Project Title**  
 20mph Phase One Monitoring

**Drawing Title**  
 Central North Cardiff

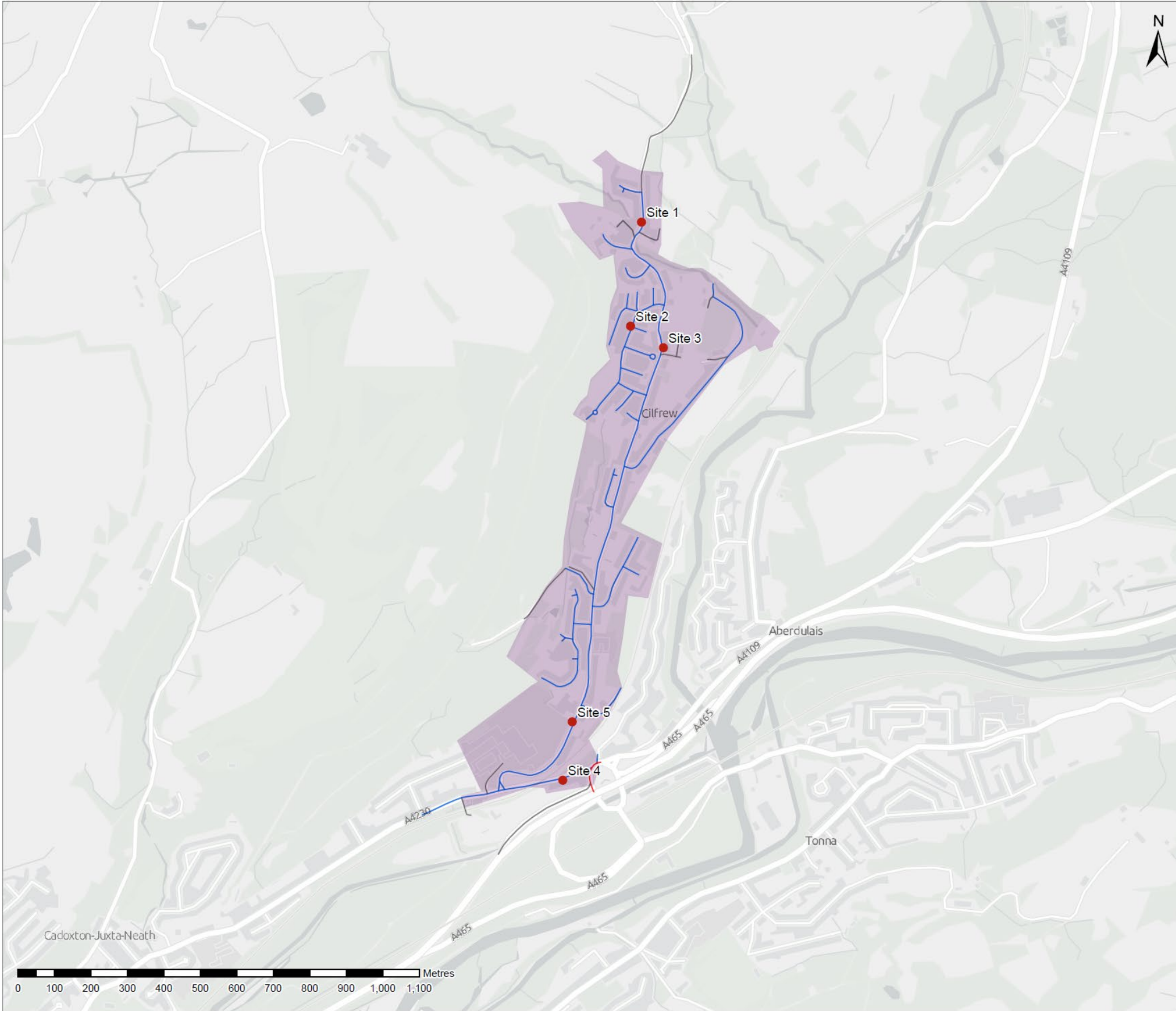
**Scale at A3**  
 1:25,000

**Drawing Status**  
 For Information

<b>Drawing Number</b> Figure A.3	<b>Revision</b> P01
-------------------------------------	------------------------







## Legend

- Phase One Boundary
- Monitoring Sites**
- Site
- Road Network**
- 20mph
- Exception
- Out of Scope

### Licence

© Crown copyright and database rights 2023. OS 0100060670



Yn eiddo Cyhoeddus Cymdeithasol  
Lleoliad Cymru  
Yn eiddo Cyhoeddus Cymdeithasol  
Lleoliad Cymru  
A Company Limited by Guarantee, Registered in Wales, Company No. 06470013  
Registered Office Address: 2 Llyn Cadebyr, Ffronddol, Rhondda Cymun Taf, CF11 4TH

### Project Title

20mph Phase One Monitoring

### Drawing Title

Cilfrew

### Scale at A3

1:10,000

### Drawing Status

For Information

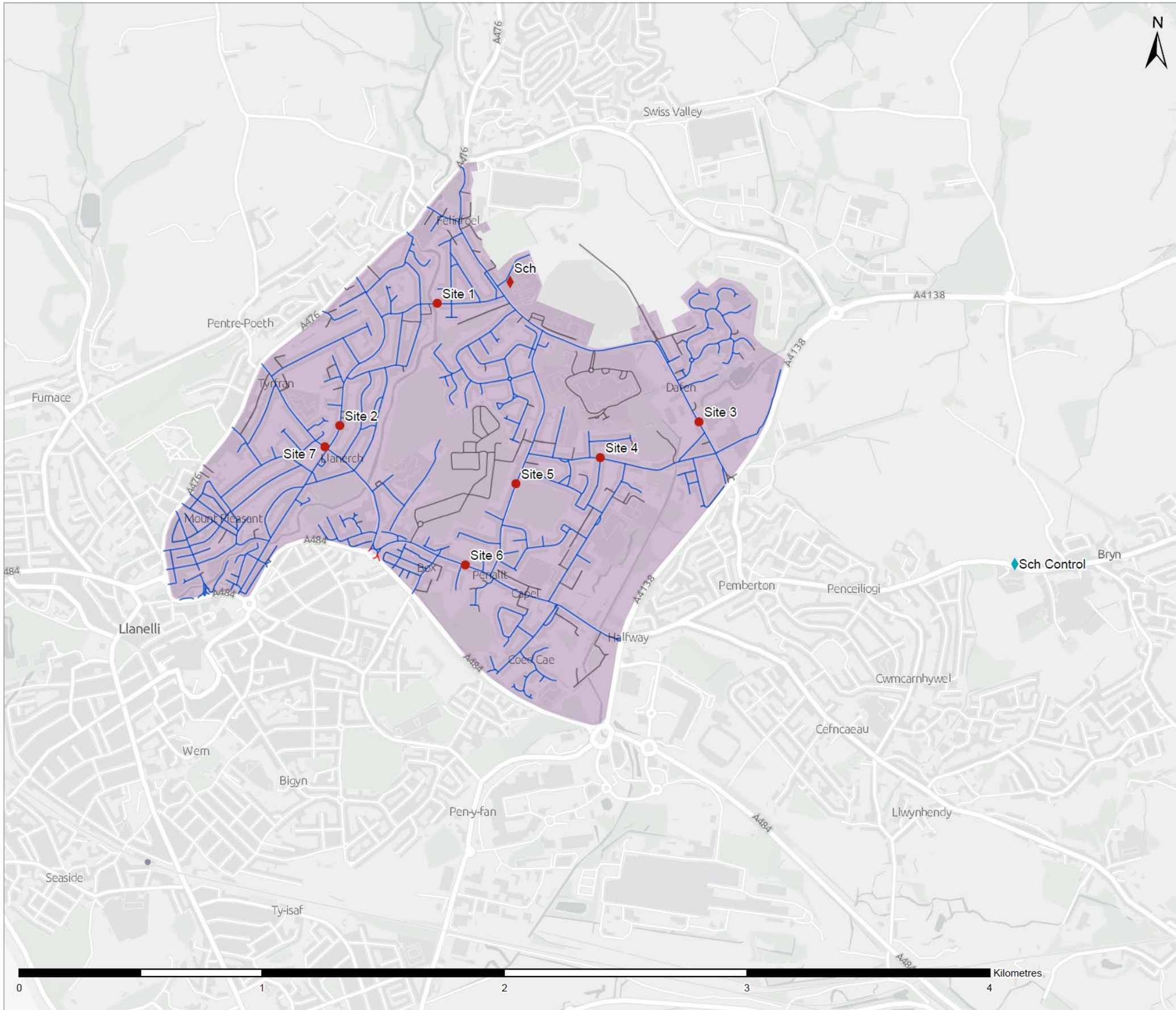
### Drawing Number

Figure A.4

### Revision

P01





### Legend

- Phase One Boundary
- Monitoring Sites**
- ◆ School
- ◆ School (Control)
- Site
- Road Network**
- 20mph
- Exception
- Out of Scope

**Licence**  
 © Crown copyright and database rights 2023. OS 0100060670



Cwmwl Cyllyngedig (we) Warran, Colchester yng Nghymru. 1001 Cwmwl 08470013.  
 Cyllyngedig Dwyfodol: 3 Llyn Cadyrn, Pen-y-fan, Rhondda Cynon Taf, CF37 4TH  
 A Company Limited by Guarantee. Registered in Wales. Company No. 08476013.  
 Registered Office Address: 3 Llyn Cadyrn, Pen-y-fan, Rhondda Cynon Taf, CF37 4TH

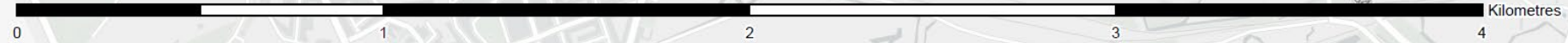
**Project Title**  
 20mph Phase One Monitoring

**Drawing Title**  
 Llanelli North

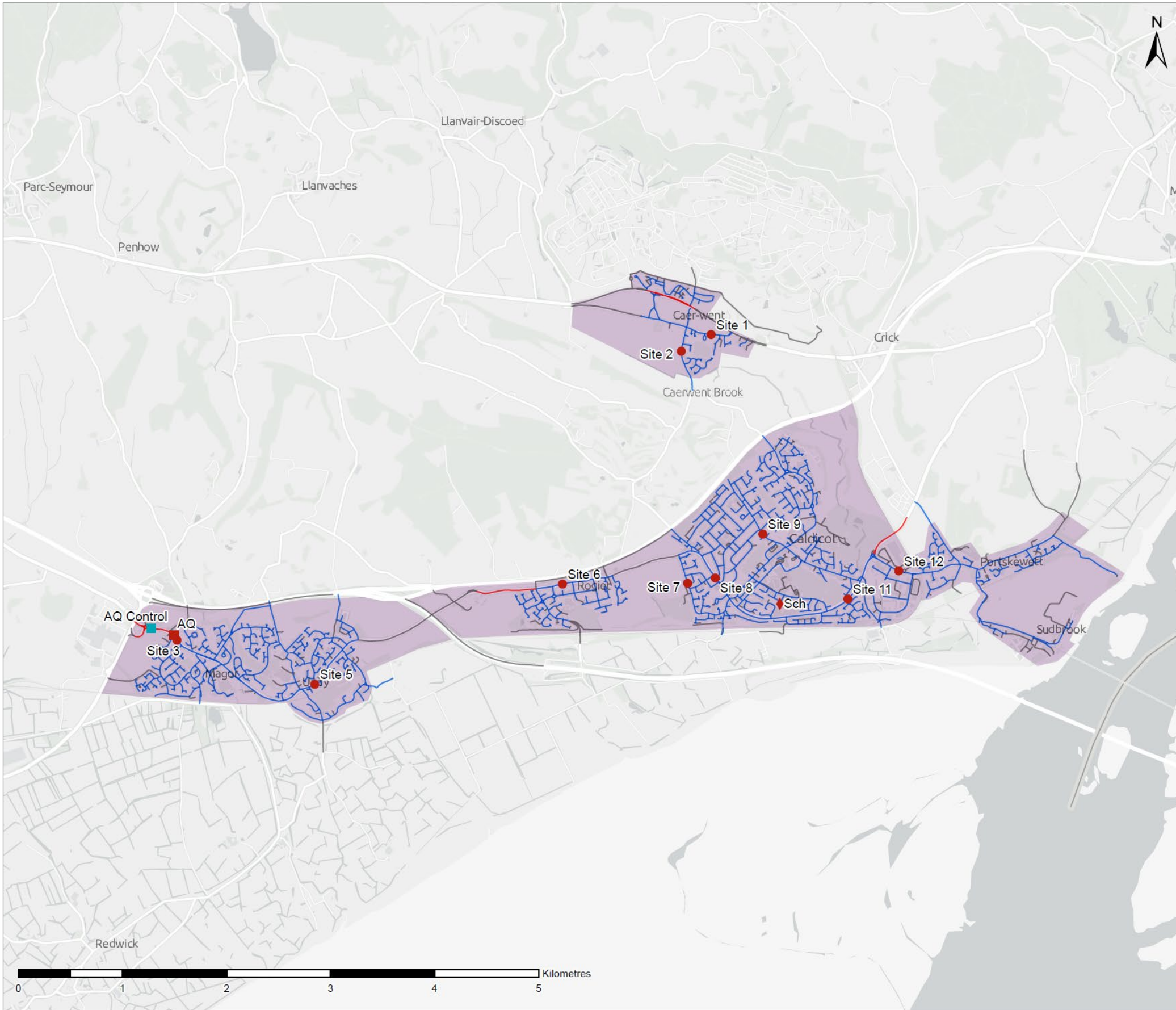
**Scale at A3**  
 1:15,000

**Drawing Status**  
 For Information

<b>Drawing Number</b> Figure A.5	<b>Revision</b> P01
-------------------------------------	------------------------







## Legend

- Phase One Boundary
- Monitoring Sites**
- Air Quality
- Air Quality (Control)
- School
- Site
- Road Network**
- 20mph
- Exception
- Out of Scope

### Licence

© Crown copyright and database rights 2023. OS 0100060670



Yn parhysu'r cerbydau a'r cerbydau eraill yn eiddoedd ym 100% Cymru. Cylfastrwydwyd ym 2013. A Company Limited by Guarantee. Registered in Wales. Company No. 08478013. Registered Office Address: 2 Llyn Cadyrn, Penrhyndebydd, Rhondda Cynon Taf, CF23 4TH

### Project Title

20mph Phase One Monitoring

### Drawing Title

Severnside

### Scale at A3

1:35,000

### Drawing Status

For Information

### Drawing Number

Figure A.6

### Revision

P01



## Legend

- Phase One Boundary
- Monitoring Sites
- ◆ School
- Site
- Site (Control)
- Road Network
- 20mph
- Out of Scope

**Licence**  
© Crown copyright and database rights 2023. OS 0100060670



Yn parhysu cerbydau a cerbydau masnachol yn eiddoedd ym Mynydd St. Brides Major, Rhondda Cynon Taf, CF37 4TH. Cyfnewid Mwydala Gofrestrdy: 3 Llyn Caebrwyn, Pontypridd, Rhondda Cynon Taf, CF37 4TH. A Company Limited by Guarantee, Registered in Wales, Company No. 06478013. Registered Office Address: 3 Llyn Caebrwyn, Pontypridd, Rhondda Cynon Taf, CF37 4TH.

**Project Title**  
20mph Phase One Monitoring

**Drawing Title**  
St Brides Major

**Scale at A3**  
1:15,000

**Drawing Status**  
For Information

<b>Drawing Number</b> Figure A.7	<b>Revision</b> P01
-------------------------------------	------------------------



