

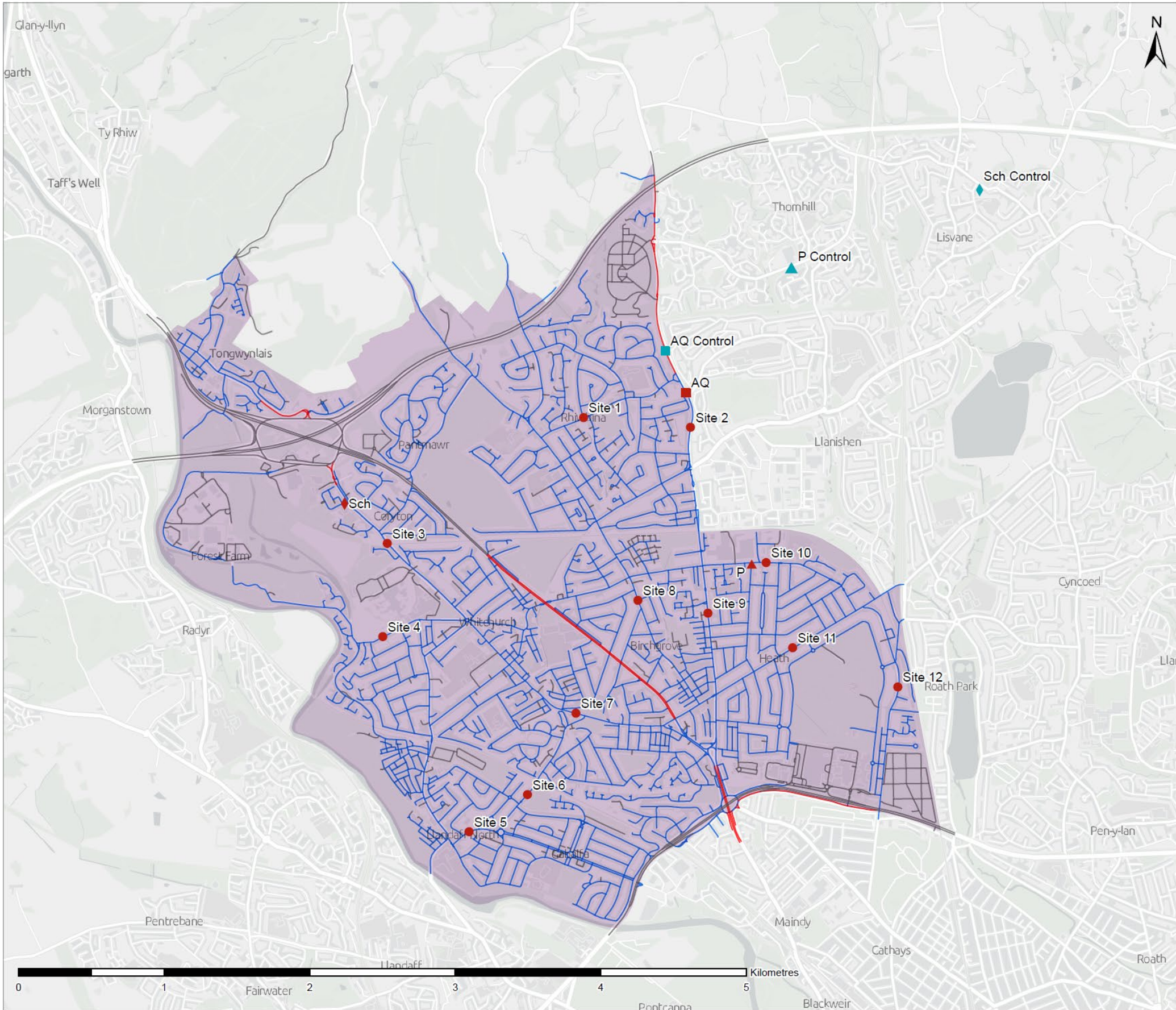


Default 20mph Speed Limit on Restricted Roads

Phase 1

Appendix A

Data Collection Locations



Legend

- Phase One Boundary
- Monitoring Sites**
- Air Quality
- Air Quality (Control)
- Pedestrian
- Pedestrian (Control)
- School
- School (Control)
- Site
- Road Network**
- 20mph
- Exception
- Out of Scope

Licence
 © Crown copyright and database rights 2023. OS 0100060670



TRAFNIDIAETH CYMRU
TRANSPORT FOR WALES

Cwmwl Cyllegrigol ddiwyd Wladyslaw, Cofrestrwyd yng Nghymru. Rhif Cwmwl 08476012.
 Cyllegrd Dwyfylla Gofrestrwyd: 3 Llyn Cadeirn, Pen-y-lan, Rhoswiler, Rhoswiler Cymru. Tel: 0757 4711.
 A Company Limited by Guarantee. Registered in Wales. Company No. 08476012.
 Registered Office Address: 3 Llyn Cadeirn, Pen-y-lan, Rhoswiler, Rhoswiler Cymru. Tel: 0757 4711.

Project Title
 20mph Phase One Monitoring

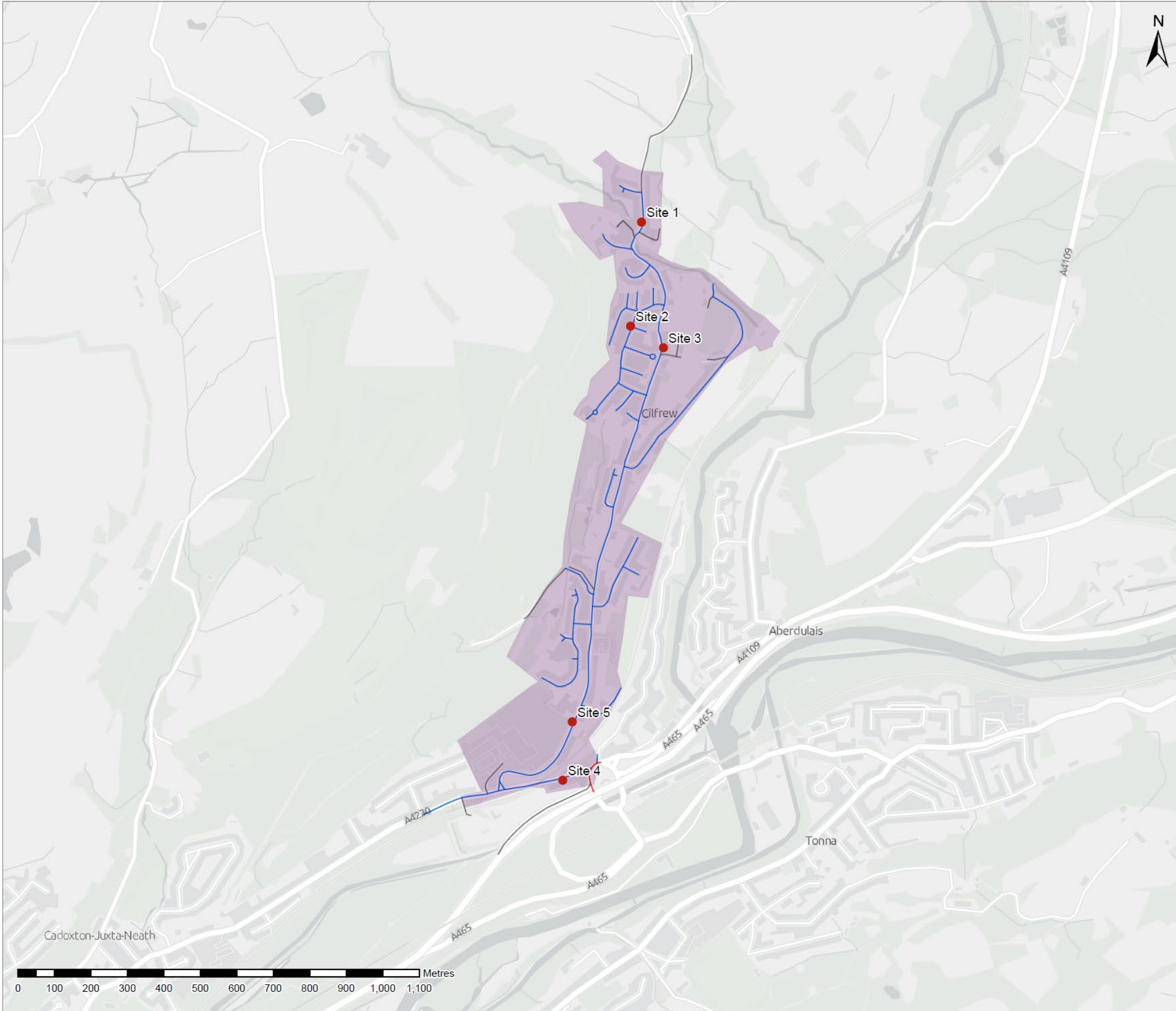
Drawing Title
 Central North Cardiff

Scale at A3
 1:25,000

Drawing Status
 For Information

Drawing Number Figure A.3	Revision P01
-------------------------------------	------------------------





Legend

- Phase One Boundary
- Monitoring Sites**
- Site
- Road Network**
- 20mph
- Exception
- Out of Scope



Licence
© Crown copyright and database rights 2023. OS 0100060670



Yn eiddo Cyhoeddus Cymdeithasol
Lleoliad Cymru
Yn eiddo Cyhoeddus Cymdeithasol
Lleoliad Cymru

Canolfan Gyhoeddus Iechyd Wariant, Colwyn ym 1998. Rhif Canolfan 08478013.
Cyflwynwyd ym 1998. 2 Llyn Caeffryn, Penrhyn, Rhondda Cymru. Ffôn: 01497 4111.
A Company Limited by Guarantee. Registered in Wales. Company No. 08478013.
Registered Office Address: 2 Llyn Caeffryn, Penrhyn, Rhondda Cymru. Ffôn: 01497 4111.

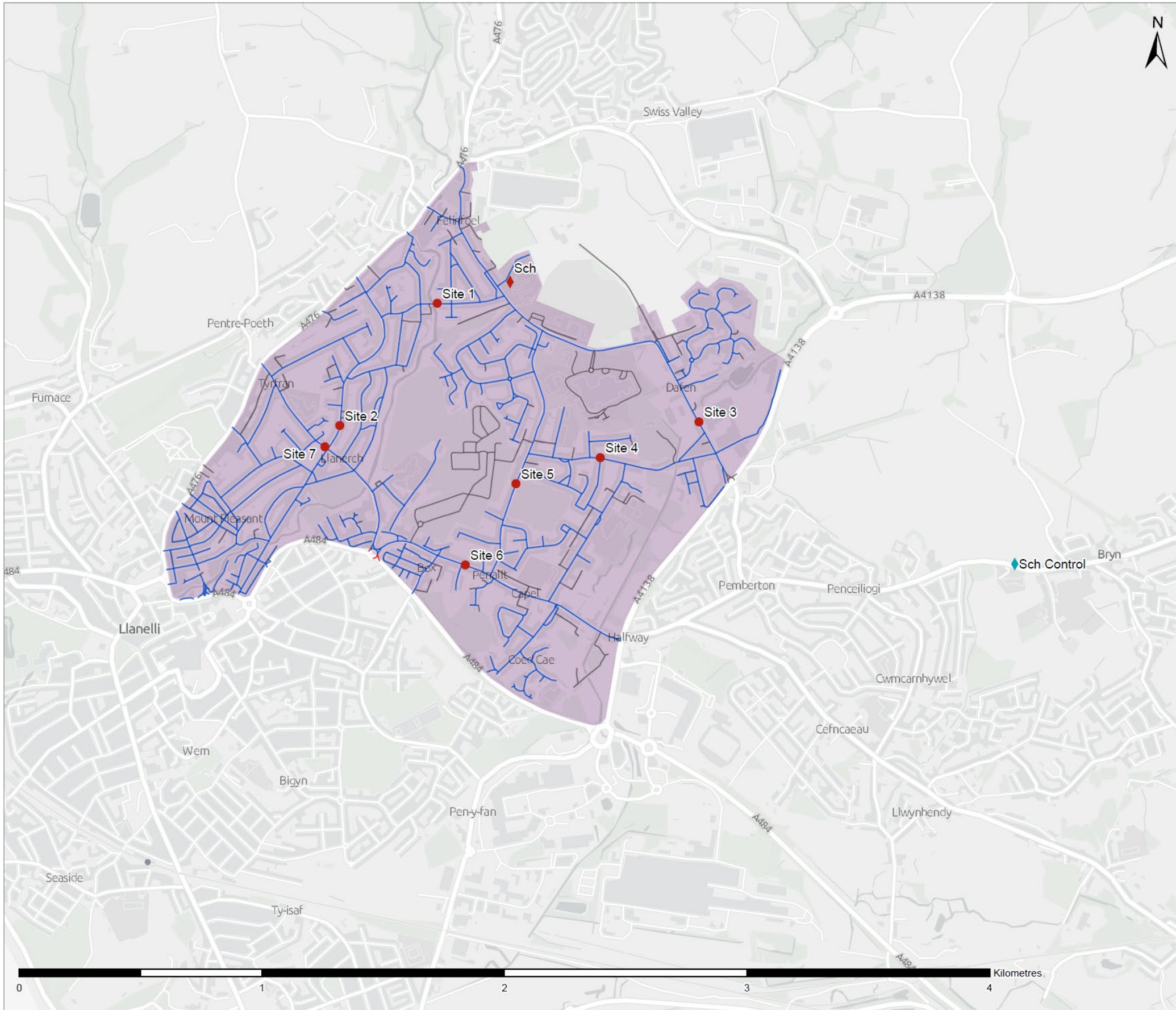
Project Title
20mph Phase One Monitoring

Drawing Title
Cilfrew

Scale at A3
1:10,000

Drawing Status
For Information


Drawing Number Figure A.4	Revision P01
-------------------------------------	------------------------



Legend

- Phase One Boundary
- Monitoring Sites**
- School
- School (Control)
- Site
- Road Network**
- 20mph
- Exception
- Out of Scope

Licence
 © Crown copyright and database rights 2023. OS 0100060670



TRAFNIDIAETH CYMRU
TRANSPORT FOR WALES

Cwmwl Cyllyngedig Cwmwl Wernant, Cwmwl Cyllyngedig Nghyrru, 1001 Cwmwl 08470013.
 Cyllyngedig Cwmwl Cwmwl Wernant, Cwmwl Cyllyngedig Nghyrru, 1001 Cwmwl 08470013.
 A Company Limited by Guarantee. Registered in Wales. Company No. 08470013.
 Registered Office Address: 1001 Cwmwl, Cwmwl Cyllyngedig Nghyrru, 1001 Cwmwl 08470013.

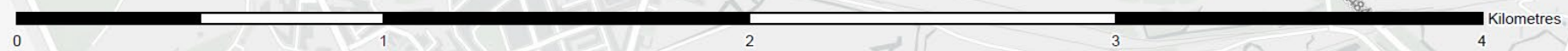
Project Title
 20mph Phase One Monitoring

Drawing Title
 Llanelli North

Scale at A3
 1:15,000

Drawing Status
 For Information

Drawing Number Figure A.5	Revision P01
-------------------------------------	------------------------





Legend

- Phase One Boundary
- Monitoring Sites
- ◆ School
- Site
- Site (Control)
- Road Network
- 20mph
- Out of Scope

Licence
 © Crown copyright and database rights 2023. OS 0100060670



Cwmni Cyhoeddus Cymru (Cyf) Ltd. Cwmni Cyhoeddus Cymru (Cyf) Ltd. Cwmni Cyhoeddus Cymru (Cyf) Ltd.
 Cyfnewid Neudolfa Gofrestrdy: 3 Llyn Caebrwyn, Porthyrhŷd, Rhondda Cynon Taf, CF37 4TH
 A Company Limited by Guarantee. Registered in Wales. Company No. 06478013.
 Registered Office Address: 3 Llyn Caebrwyn, Porthyrhŷd, Rhondda Cynon Taf, CF37 4TH

Project Title
 20mph Phase One Monitoring

Drawing Title
 St Brides Major

Scale at A3
 1:15,000

Drawing Status
 For Information

Drawing Number Figure A.7	Revision P01
-------------------------------------	------------------------



